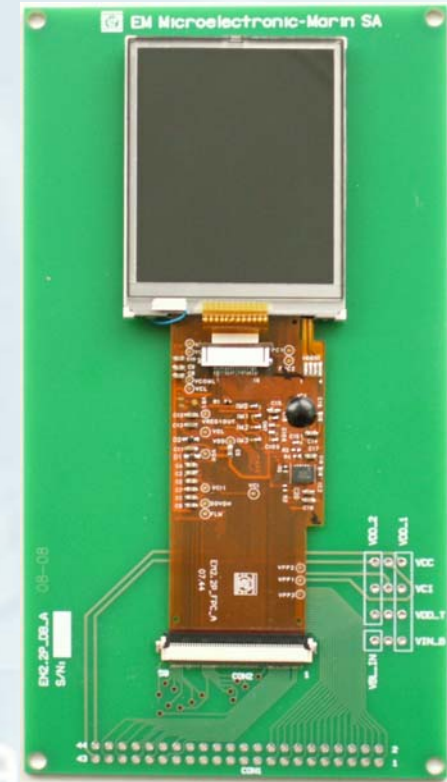


Development Board

- ❖ The easy way to connect EM2.2P TFT Module for your evaluation and software development (standard header connector 2.54mm pitch)
- ❖ Jumper location for current consumption measurement and for supply source selection



Development Board

(TFT module not included)

CN1		
DB0	1	DB1
DB2	2	DB3
DB4	3	DB5
DB6	4	DB7
DB8	5	DB9
DB10	6	DB11
DB12	7	DB13
DB14	8	DB15
DB16	9	DB17
/WR	10	/RD
/CS	11	RS
/RESET	12	SDI
SDO	13	HSYNC
VSYNC	14	DOTCLK
ENABLE	15	FLM
EN_B	16	PWM_B
VSS_B	17	VBL_IN
EN_T	18	IRQ_T
SCK_T	19	SDI_T
/SS_T	20	SDO_T
SRDY_T	21	GND
VDD_1	22	VDD_2
	23	
	24	
	25	
	26	
	27	
	28	
	29	
	30	
	31	
	32	
	33	
	34	
	35	
	36	
	37	
	38	
	39	
	40	
	41	
	42	
	43	
	44	

Header 22X2

Pin out Table